



## Carlton Manor Park

Carlton-On-Trent, Newark, NG23 6NU

£70,000



Located in the serene surroundings of Carlton Manor Park, this charming small park home in Carlton-On-Trent offers a delightful retreat for those seeking a peaceful lifestyle. With a well-designed layout, the property features a welcoming reception room, two bedrooms and a shower room.

Living in Carlton Manor Park means enjoying the tranquillity of nature while still being within reach of local amenities in Newark. This property is ideal for individuals or couples over the age of 50 looking for a low-maintenance home in a picturesque setting.

Whether you are seeking a permanent residence or a weekend getaway, this park home offers a unique opportunity to embrace a simpler, more relaxed way of life. Don't miss the chance to make this delightful property your own.



## Description

A rural located park home in Carlton On Trent for the over 50s comprising of a kitchen, lounge, two beds and a shower room with a side enclosed garden.

## Hallway

The property has two entrance doors, one into the lounge and the other into the hallway.

## Kitchen 11'6" x 7'5" (3.51m x 2.27m)

The kitchen has a range of white wall and base units, integrated electric oven, four ring gas hob, space for a fridge freezer and washing machine, stainless sink and dual aspect windows. The central heating combi boiler is located in the kitchen.

## Lounge 11'6" x 9'4" (3.51m x 2.86m)

The lounge is front facing with an upvc window and roller blind, laminate flooring coving and fan ceiling light.

## Bedroom One 11'6" x 14'2" (3.51m x 4.33m)

A double bedroom to the rear of the park home with laminate flooring, upvc with blind and fan ceiling light.

## Bedroom Two 7'10" x 5'3" (2.39m x 1.61m)

A small single side facing room with laminate flooring, single wardrobe.

## Shower Room 7'10" x 4'7" (2.39m x 1.41m)

The shower room has a corner curved shower cubicle with a pump fed shower, wc and vanity hand basin, white ladder towel rail, obscure side window, vinyl stone effect flooring, coving and extractor.

## Outside

There is a side and rear facing low maintenance gravel garden enclosed by a picket fence with small plants and shrubs.

## Disclaimer

1. MONEY LAUNDERING REGULATIONS: Intending purchasers will be asked to produce identification documentation at a later stage and we would ask for your co-operation in order that there will be no delay in agreeing the sale.

2. General: While we endeavour to make our sales particulars fair, accurate and reliable, they are only a general guide to the property and, accordingly, if there is any point which is of particular importance to you, please contact the office and we will be pleased to check the position for you, especially if you are contemplating travelling some distance to view the property.

3. Measurements: These approximate room sizes are only intended as general guidance. You must verify the dimensions carefully before ordering carpets or any built-in furniture.

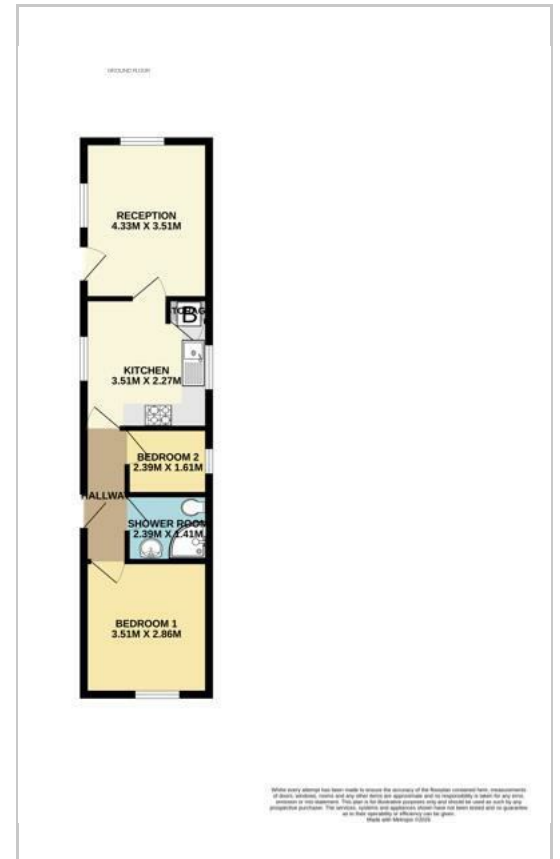
4. Services: Please note we have not tested the services or any of the equipment or appliances in this property, accordingly we strongly advise prospective buyers to commission their own survey or service reports before finalising their offer to purchase.

5. THESE PARTICULARS ARE ISSUED IN GOOD FAITH BUT DO NOT CONSTITUTE REPRESENTATIONS OF FACT OR FORM PART OF ANY OFFER OR CONTRACT. THE MATTERS REFERRED TO IN THESE PARTICULARS SHOULD BE INDEPENDENTLY VERIFIED BY PROSPECTIVE BUYERS OR TENANTS. NEITHER Clark Estates OR ANY OF ITS EMPLOYEES OR AGENTS HAS ANY AUTHORITY TO MAKE OR GIVE ANY REPRESENTATION OR WARRANTY WHATEVER IN RELATION TO THIS PROPERTY.

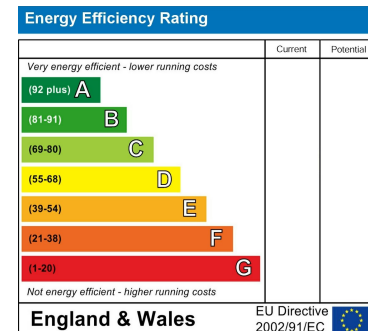
## Area Map



## Floor Plans



## Energy Efficiency Graph



These particulars, whilst believed to be accurate are set out as a general outline only for guidance and do not constitute any part of an offer or contract. Intending purchasers should not rely on them as statements of representation of fact, but must satisfy themselves by inspection or otherwise as to their accuracy. No person in this firm's employment has the authority to make or give any representation or warranty in respect of the property.

14-16 Eldon Street, Tuxford, NG22 0LH

Tel: 01777 801 901 Email: dawn@clark-estates.co.uk www.clark-estates.co.uk